



**Shakespeare Road**  
The Mounts, Northampton

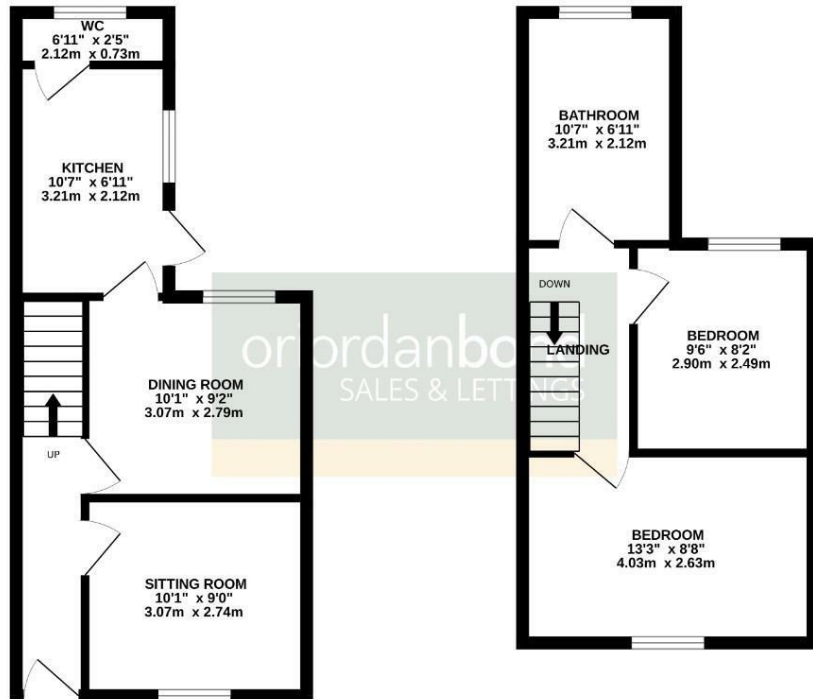
**oriordanbond**  
SALES & LETTINGS



GROUND FLOOR



1ST FLOOR



TOTAL FLOOR AREA : 850sq.ft. (79.0 sq.m.) approx.

While every attempt has been made to ensure the accuracy of the floorplan contained here, measurements of doors, windows, rooms and any other items are approximate and no responsibility is taken for any error, omission or mis-statement. The plan is for illustrative purposes only and should be used as such by any prospective purchaser. The services, systems and appliances shown have not been tested and no guarantee as to their operability or efficiency can be given.  
Made with Microplan 6/2020

## Shakespeare Road

The Mounts

NN1 3QG

OFFERS OVER £160,000

O'Riordan Bond is pleased to offer for sale this two bedroom Victorian terraced property in The Mounts. Offered for with no onward chain, the property is within walking distance to the town centre and general hospital.

The accommodation comprises entrance hall, sitting room, separate dining room, kitchen, cloakroom/WC, two first bedrooms and a large bathroom. Benefits include gas radiator heating and uPVC double glazing. (C/850/-)

### Additional information

- Council Tax Band: A
- Energy Efficiency Rating: C

### Viewing

Viewing strictly by appointment – details below

### Disclaimer

O'Riordan Bond Estate Agents Limited has not tested apparatus, equipment, fittings or services and so cannot verify they are in working order. The buyer is advised to obtain verification from their solicitor or surveyor.

O'Riordan Bond Abington Sales

01604 639007

abington@oriordanbond.co.uk

